

Avebury Bray Cottage 1820
11th PART: WELCOME to [www. THE AVEBURY SCROLL .com](http://www.THEAVEBURYSCROLL.com)
Enjoy the traditional beauty and character of historic England at it's best

SUB-INDEX
CLICK ON AN IMAGE TO ENLARGE IT

Please note that road markings have been added to these photographs to ensure that vehicles do not leave the road so that pedestrians are safe, and to enhance traffic flow



[CLICK IMAGE 1](#)



[CLICK IMAGE 2](#)



[CLICK IMAGE 3](#)



[CLICK IMAGE 4](#)



[CLICK IMAGE 5](#)



[CLICK IMAGE 6](#)



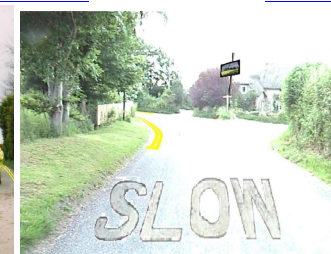
[CLICK IMAGE 7](#)



[CLICK IMAGE 8](#)



[CLICK IMAGE 9](#)



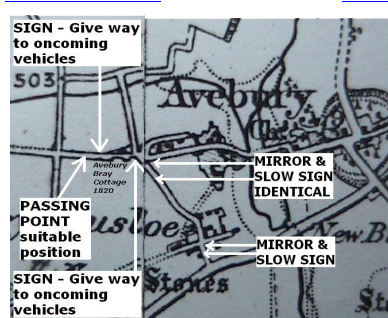
[CLICK IMAGE 10](#)



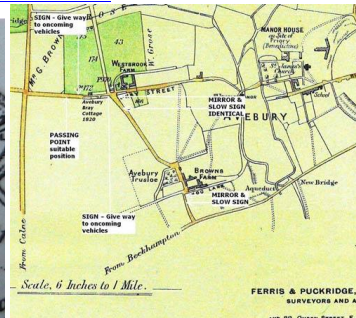
[CLICK IMAGE 11](#)



[CLICK IMAGE 12](#)



[CLICK IMAGE 13](#)



[CLICK IMAGE 14](#)



[CLICK IMAGE 15](#)



[CLICK IMAGE 16](#)



[CLICK IMAGE 17](#)



[CLICK IMAGE 18](#)

[\(Return to MAIN INDEX\)](#)

NOW RELAX! TAKE A SCROLL DOWN
THIS 200 YEAR OLD HISTORIC LANE IN THE MIDDLE OF THE
AVEBURY WORLD HERITAGE SITE GEORGE IV DISTRICT!



[\(Back to SUB-INDEX\)](#)



[\(Back to SUB-INDEX\)](#)



[\(Back to SUB-INDEX\)](#)



[\(Back to SUB-INDEX\)](#)



[\(Back to SUB-INDEX\)](#)



[\(Back to SUB-INDEX\)](#)



[\(Back to SUB-INDEX\)](#)



[\(Back to SUB-INDEX\)](#)



[\(Back to SUB-INDEX\)](#)



CONVEX MIRROR & SLOW SIGN PROVIDING VISIBILITY AT HISTORIC CROSSWAYS THE SAME AS FOR SIMILAR JUNCTION NEARBY
([Back to SUB-INDEX](#))

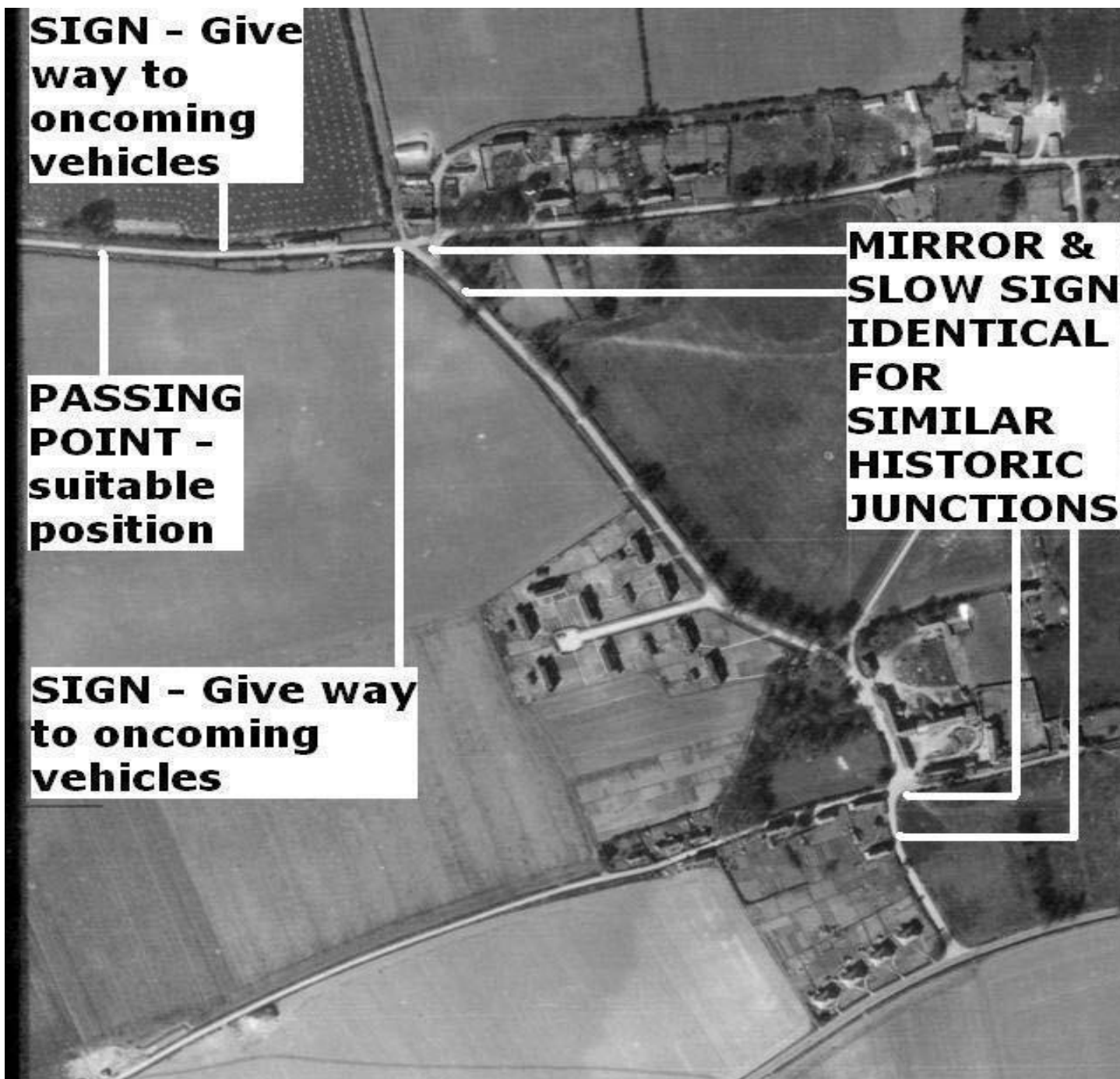
SIMILAR HISTORIC JUNCTION WITH CONVEX MIRROR & SLOW SIGN PROVIDING VISIBILITY FOR NEIGHBOURING STREET



[\(Back to SUB-INDEX\)](#)



Royal Air Force, (14th APRIL 1946.), 4076, 106G. UK. F/20"/540 SQDN, Swindon: English Heritage National Monuments Record
Photograph showing *Avebury Bray Cottage 1820* - please note that double yellow lines each side of the road and a PASSING POINT in a suitable position have been added to ensure that traffic does not leave the road so that pedestrians are safe, and to enhance traffic flow.
[\(Back to SUB-INDEX\)](#)

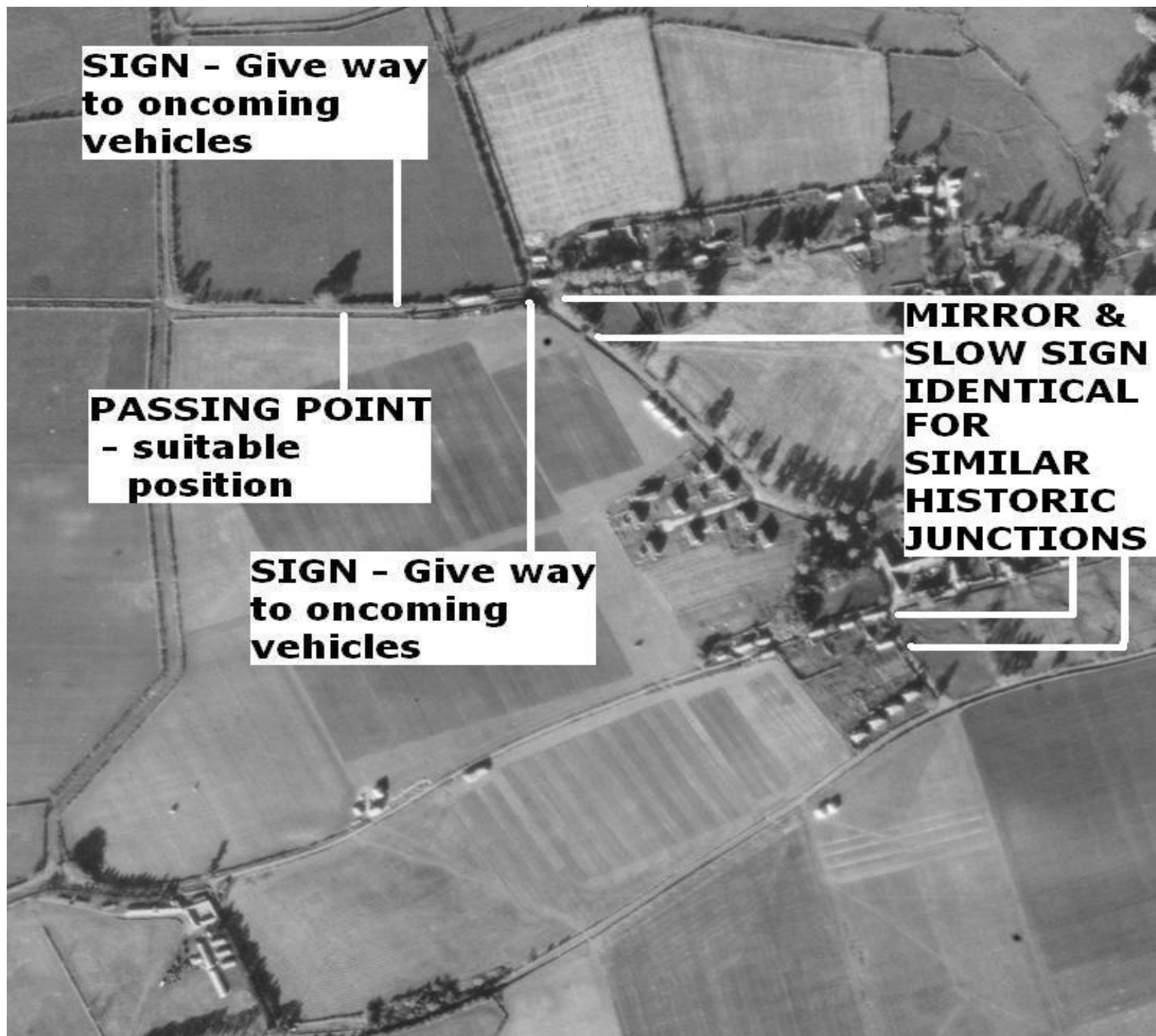


**SIGN - Give
way to
oncoming
vehicles**

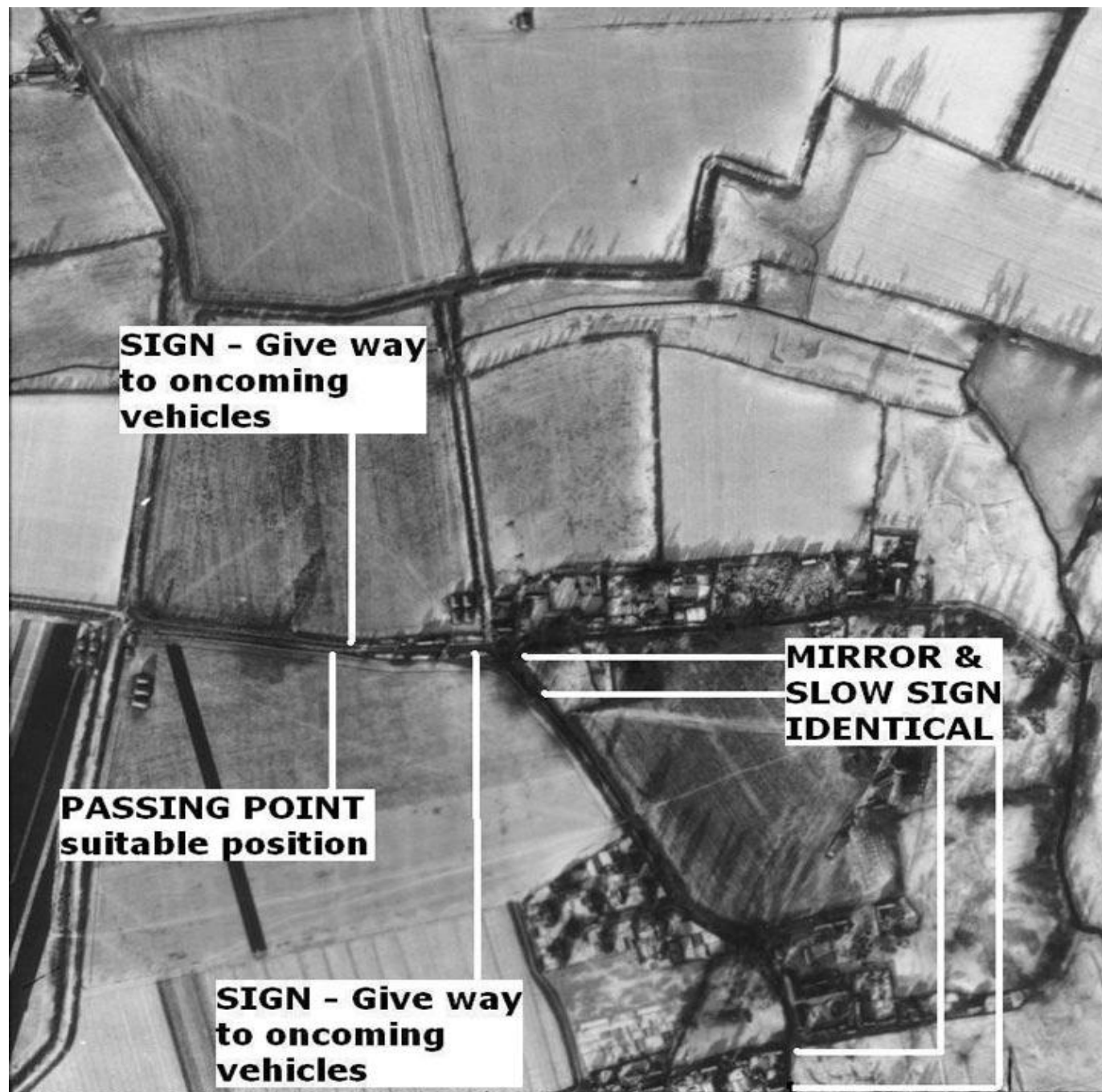
**PASSING
POINT -
suitable
position**

**SIGN - Give way
to oncoming
vehicles**

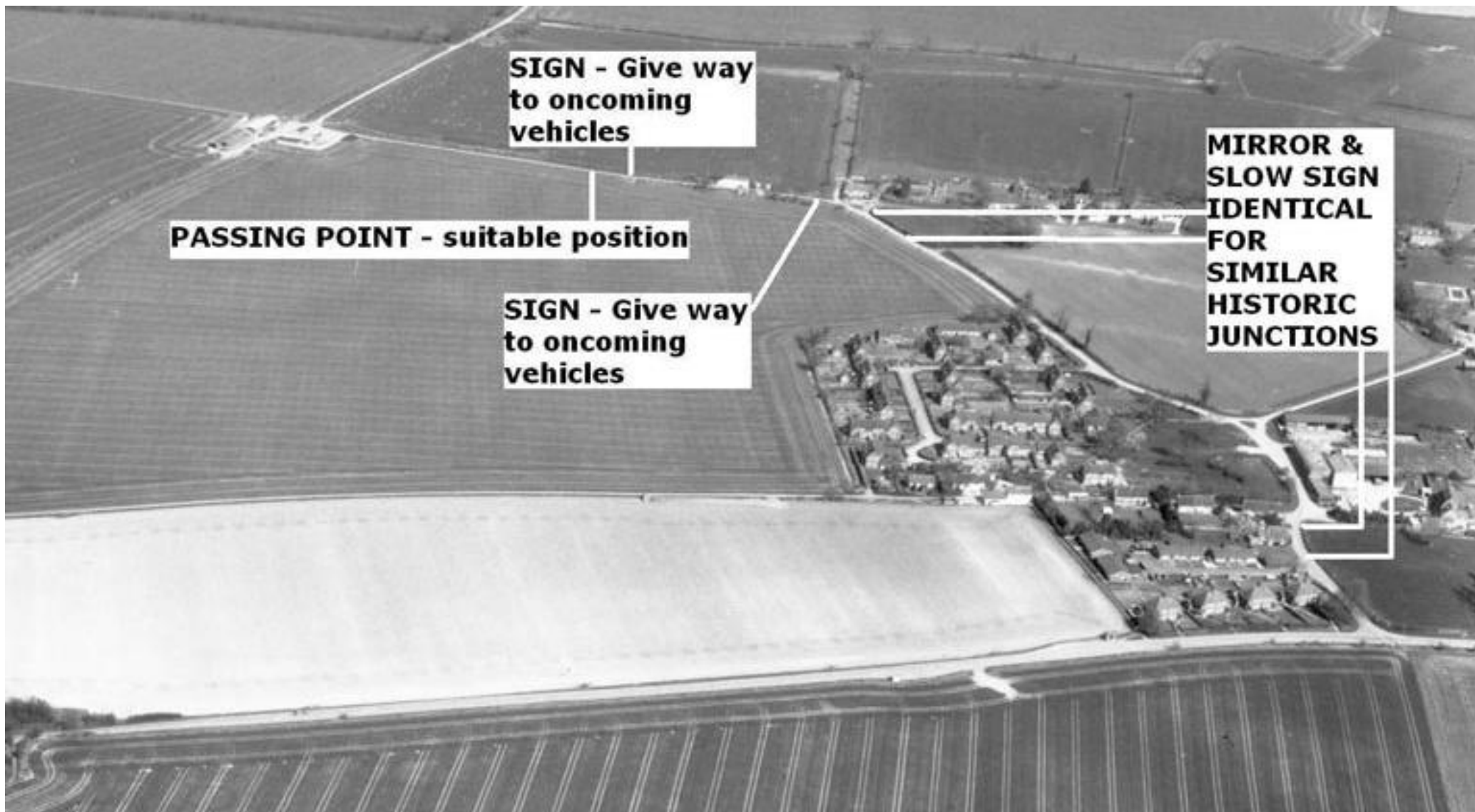
**MIRROR &
SLOW SIGN
IDENTICAL
FOR
SIMILAR
HISTORIC
JUNCTIONS**



Royal Air Force, (4th NOVEMBER 1946.), 3082, CPE/UK/F/36"/58 SQDN, Swindon: English Heritage National Monuments Record
([Back to SUB-INDEX](#))

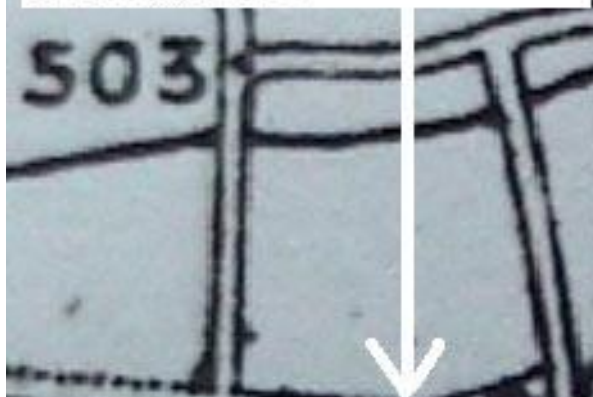


NMR, (1952), *Aerial Photograph Avebury*, Swindon: English Heritage National Monuments Record
Archaeological photograph showing diagonal historic tracks by tractors of local farmers across the fields
([Back to SUB-INDEX](#))



NMR, (1987), *Aerial photograph of Avebury, Swindon*: English Heritage National Monuments Record
([Back to SUB-INDEX](#))

**SIGN - Give way
to oncoming
vehicles**



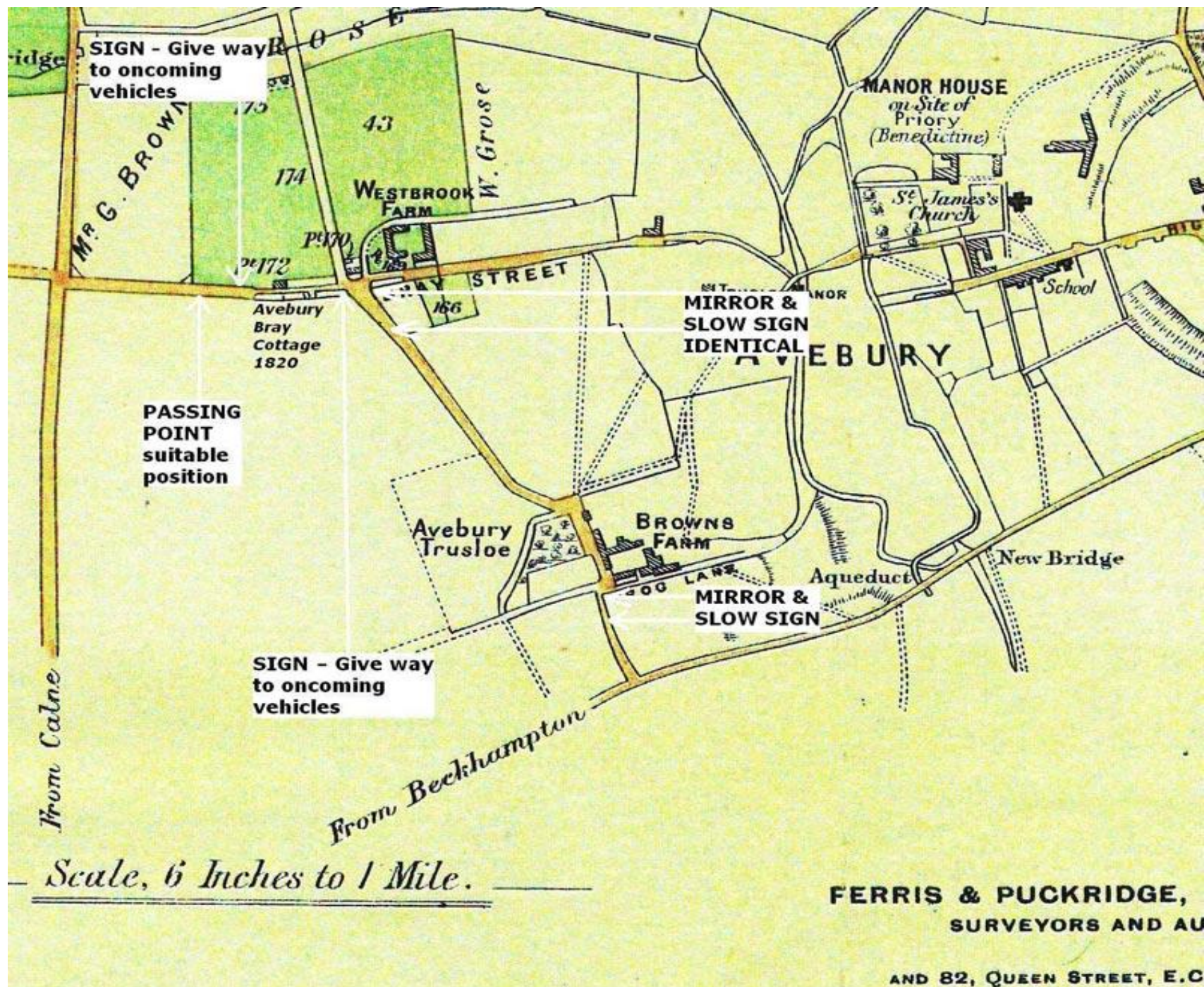
**PASSING
POINT
suitable
position**

*Avebury
Bray
Cottage
1820*

**SIGN - Give way
to oncoming
vehicles**

**MIRROR &
SLOW SIGN
IDENTICAL**

**MIRROR &
SLOW SIGN**



Ferris & Puckridge, (July 22nd 1909), *Surveyors Plan*, PEWSEY: MILTON, and LONDON: 82, QUEEN STREET: Ferris & Puckridge
[\(Back to SUB-INDEX\)](#)